

MARCH

Pike County Public Library
 (Lee Avenue)
 informationplace.org
 *Registration Required.



Saturday

1 Story Time 11:00
 Quilters Group 11:00
 1:00 Dr. Seuss Show

Monday

Tuesday

Wednesday

Thursday

Friday

2



3

Teen Activity Club 4:00

4

Smartphone Basics 10:30
 Teen Guitar Class B* 2:00
 Book Talks 5:00
 Adult Guitar Class* 5:00
 Sign Language Class 5:30

5

Basic Computer Skills 10:30
 Teen Guitar Class* 4:30

6

Story Time 11:00
 Story Time 2:00
 Kids Guitar Class B* 3:00
 Music Theory* 5:00

7

Kids Guitar Class A* 4:30

8

Story Time 11:00
 Chess Club 4:00

9



10

Teen Guitar Class B* 2:00
 Bluey Visits the Library 5:00
 Adult Guitar Class* 5:00
 Sign Language Class 5:30

12

Teen Guitar Class* 4:30

Story Time 11:00
 Story Time 2:00
 Kids Guitar Class B* 3:00
 Music Theory* 5:00
 Dungeons & Dragons 5:00

14

Kids Guitar Class A* 4:30

15

Story Time 11:00
 Quilters Group 11:00

16



17

Teen Activity Club 4:00

Teen Guitar Class B* 2:00
 Dr. Seuss Extravaganza 5:00
 Adult Guitar Class* 5:00
 Sign Language Class 5:30

19

Basic Computer Skills 10:30
 Teen Guitar Class* 4:30

20 Story Time 11:00
 Story Time 2:00
 Kids Guitar Class B* 3:00
 Music Theory* 5:00

21

Kids Guitar Class A* 4:30

22

Story Time 11:00
 Chess Club 4:00

23



24

AppalReD Disaster Legal Services 11:00

Teen Guitar Class B* 2:00
 Book Talks 5:00
 Adult Guitar Class* 5:00
 Sign Language Class 5:30

26

Teen Guitar Class* 4:30

27 Story Time 11:00
 Story Time 2:00
 Kids Guitar Class B* 3:00
 Music Theory* 5:00
 Dungeons & Dragons 5:00

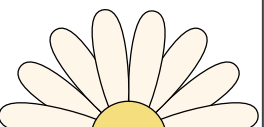
28

Kids Guitar Class A* 4:30

29

Story Time 11:00
 Quilters Group 11:00

30



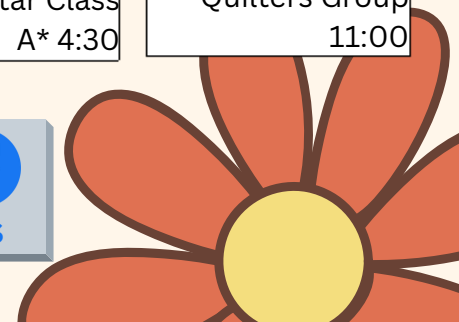
31

Teen Activity Club 4:00



606-437-6001
 MWFS 9:00-6:00
 TT 10:00-7:00

Find us on Pike County Libraries



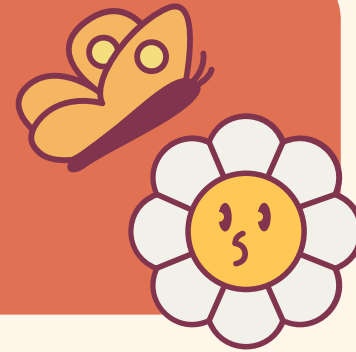
MARCH

Belfry
Public
Library

informationplace.org



Saturday



Monday

Tuesday

Wednesday

Thursday

Friday

2



3

4

5

6

Story Time 2:00

Sign Language
Class 5:30

7

Lego Club 4:30

8

Dr. Seuss Show
10:00

12:00 Quilting
Enthusiasts

9



10

11

Yarn Group 4:00

12

13

Story Time 2:00

Sign Language
Class 5:30

14

Bluey Visits the
Library 4:30

15

Upcycling Craft
3:00

16



17

18

19

20

Story Time 2:00

Sign Language
Class 5:30

21

Lego Club 4:30

22

Ham Radio Info
and Testing
3:00-5:00

23



24

25

Yarn Group 4:00

26

27

Story Time 2:00

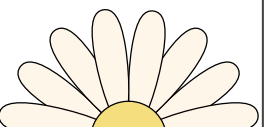
Sign Language
Class 5:30

28

AppalReD
Disaster Legal
Services 11:00

29

30



31



606-353-9429

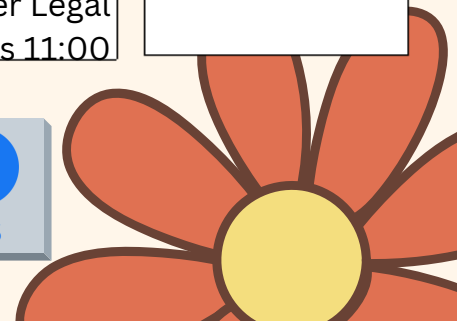
M Closed

TT 10:00-7:00

W 9:00-6:00

FS 9:00-6:00

Find us on 
Pike County Libraries



MARCH

Elkhorn
City
Public
Library

informationplace.org



Saturday

1
Dr. Seuss Show
4:00

Monday

Tuesday

Wednesday

Thursday

Friday

2



3

4

Beginner's
Acting Class
(Ages 7-11) 4:30

5

6

Story Time 2:00

7

8

Family Story
Time 11:00

9



10

11

Beginner's
Acting Class
(Ages 7-11) 4:30

12

13

Story Time 2:00
Bluey Visits the
Library 5:00

14

15

16



17

18

Beginner's
Acting Class
(Ages 7-11) 4:30

19

20

Story Time 2:00
World
Storytelling 5:00

21

22

Family Story
Time 11:00

23



24

25

Beginner's
Acting Class
(Ages 7-11) 4:30

26

AppalReD
Disaster Legal
Services 11:00

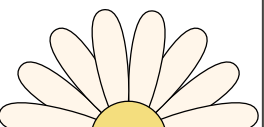
27

Story Time 2:00

28

29

30



31



606-754-5451

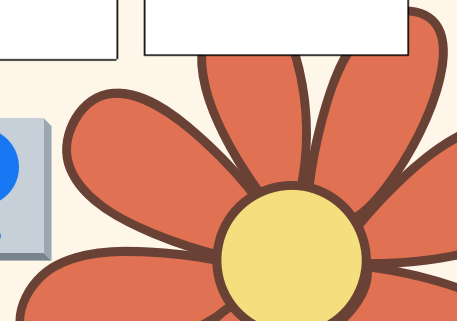
M Closed

TT 10:00-7:00

W 9:00-6:00

FS 9:00-6:00

Find us on
Pike County Libraries



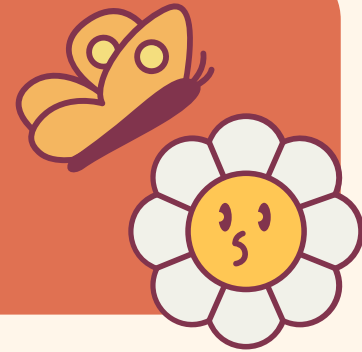
MARCH

Phelps Public Library

informationplace.org



Saturday



Monday

Tuesday

Wednesday

Thursday

Friday

2



3

4

Story Time 2:00

5

6

7

8

9



10

11

Story Time with
Bluey 2:00

12

13

14

15

16



17

18

Story Time 2:00

19

20

March Into
Spring 4:30

21

22

23



24

25

Story Time 2:00

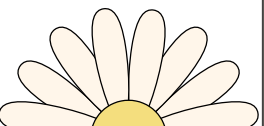
26

27

28

29

30



31



606-456-7860

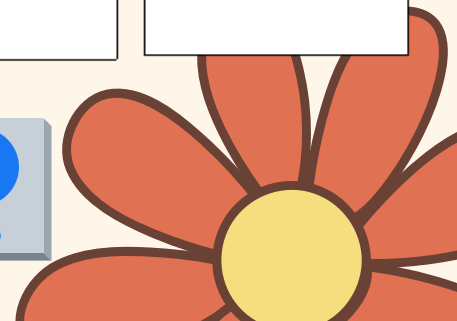
M Closed

TT 10:00-7:00

W 9:00-6:00

FS 9:00-6:00

Find us on 
Pike County Libraries



MARCH

Vesta Roberts Johnson Memorial Library

informationplace.org
*Registration Required.



Saturday

	Monday	Tuesday	Wednesday	Thursday	Friday	Saturday
2 	3	4	5	6 Story Time 1:00	7	8
9 	10	11 Mardi Gras 4:30	12 Bluey Visits the Library 4:30	13 Story Time 1:00	14	15 Teen Guitar Class* 2:00 Kids Guitar Class* 4:00
16 	17	18	19	20 Story Time 1:00	21	22
23 	24	25	26	27 Story Time 1:00	28	29 Teen Guitar Class* 2:00 Kids Guitar Class* 4:00
30 	31	<p>606-639-9839 M Closed TT 10:00-7:00 W 9:00-6:00 FS 9:00-6:00</p>		<p>Find us on Pike County Libraries</p>		